

A PROPOSED TOWN GREEN for WESTON, CT



'Community' mural by Barbara Lawless

Prepared for the Weston Board of Selectmen by Thiel Architecture + Design / June 6th 2019



THIEL

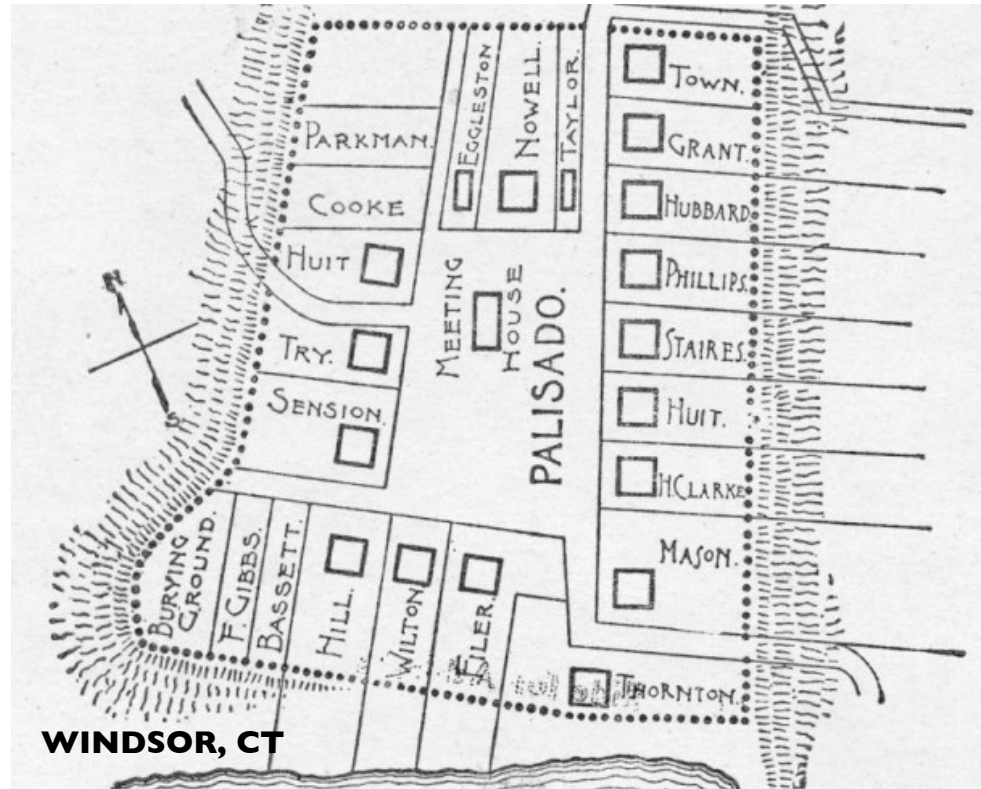
A Town Green for Weston CT



NEW HAVEN, CT



LEBANON, CT



WINDSOR, CT



NORTH HAVEN, CT

HISTORICAL CIVIC HUB



- Meeting house
- School
- Church
- Markets
- Speakers' Corner
- Parade grounds
- Military training
- Burial ground
- Public punishment
- Grazing
- Agriculture
- Town dump

A Town Green for Weston CT



IMPORTANT CIVIC ASSET



- Expand Town Hall to include an outdoor space
- Engage the community
- Create a sense of civic pride
- Celebrate important town events
- Encourage town walking
- Provide proper locations for town memorials
- Add variety of seating

A Town Green for Weston CT

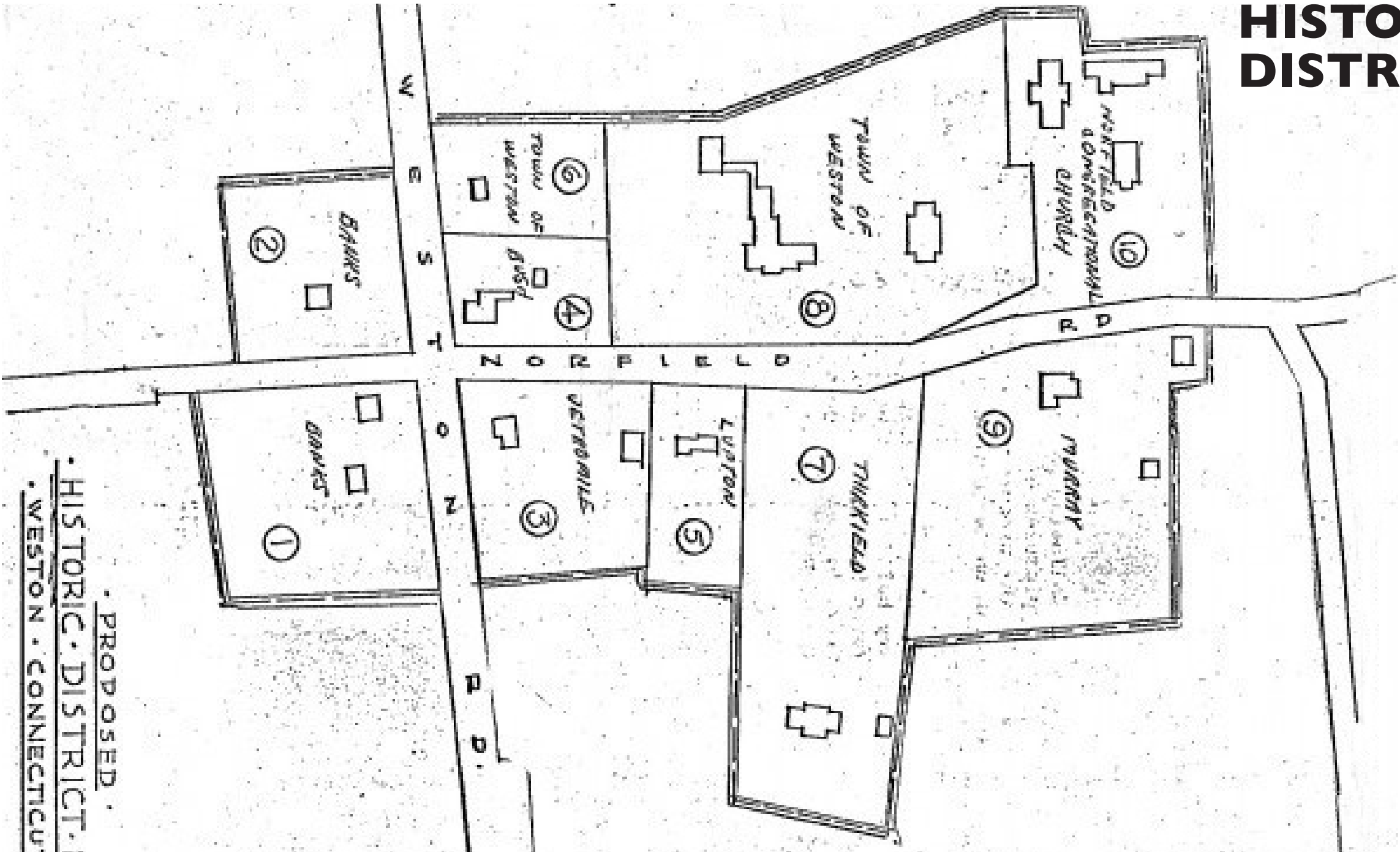


OUR TOWN'S FRONT YARD

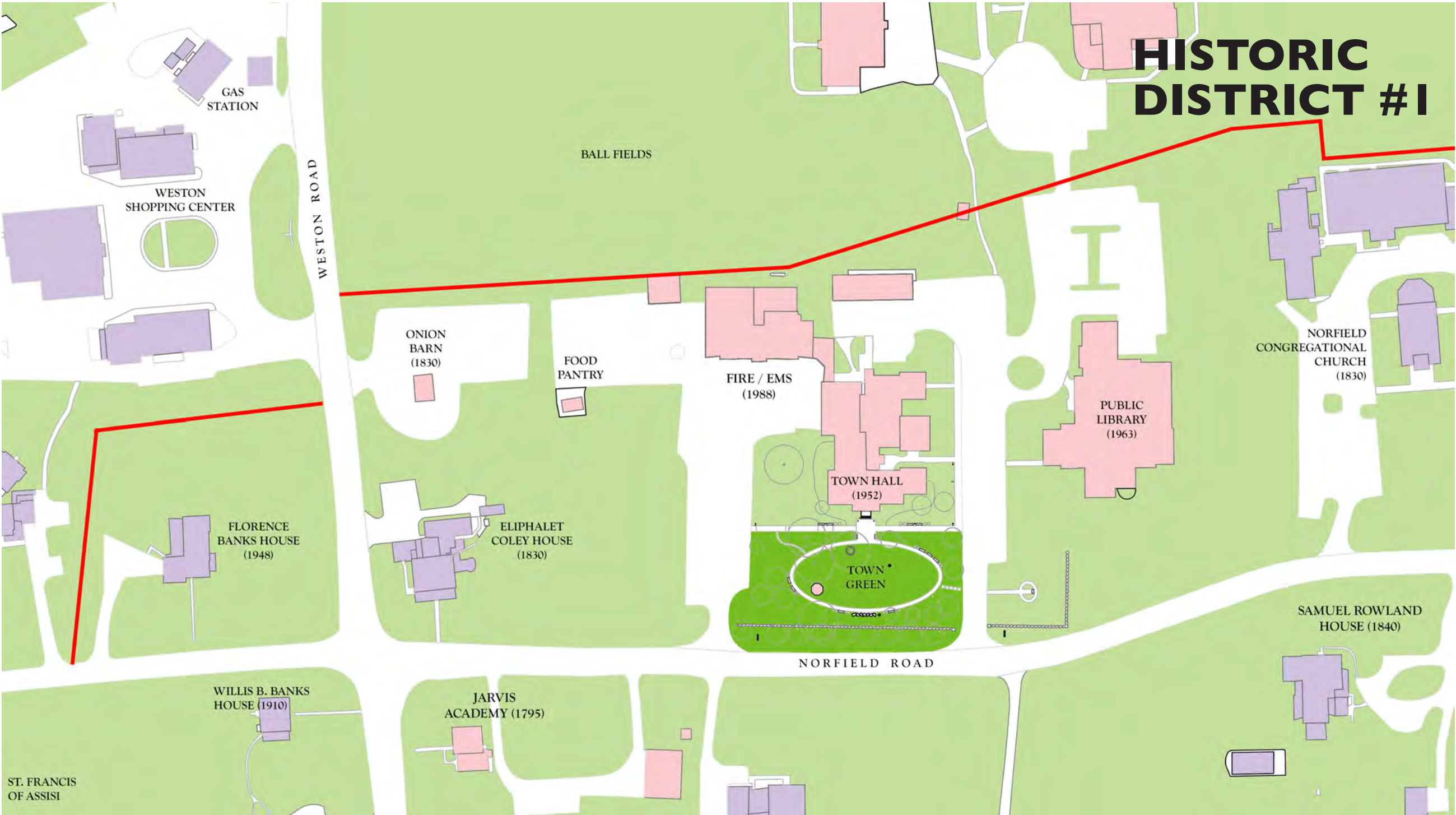
- Town Hall is the heart of the town
- Anchor of the community
- Located within the existing historical district
- Needs to be made more friendly
- Support town ceremonies
- Encourage community connectivity
- Exemplify the ideal of small town USA
- Create a Town Green

A Town Green for Weston CT

HISTORIC DISTRICT #1

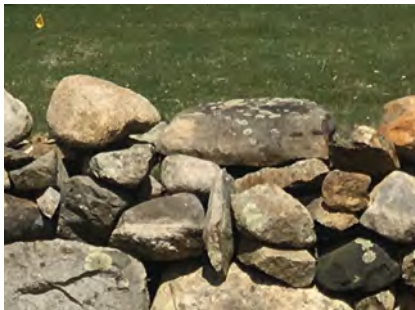


A Town Green for Weston CT



A Town Green for Weston CT

HISTORIC DISTRICT #1



1725+
Stone walls (agricultural)



1795
Jarvis House



1830
Norfield Congregational Church



1830
Eliphalet Coley House



1830
Onion Barn



1840
Samuel Rowland House



1910
Willis Banks House



1916
Parsonage, Hedgerow Common



1948
Florence Banks House



1952
Town Hall



1963
Public Library



1988
Town Hall additions / Fire EMS

Architectural Influences



Town Hall
Hampton Falls, New Hampshire



Rocky Hill Meeting House
Amesbury, Massachusetts



Old Pelham Town Hall
Pelham, Massachusetts

COLONIAL NEW ENGLAND



The Wren Building, William & Mary
Williamsburg, Virginia



Governor's Palace
Williamsburg, Virginia



John Carlyle House
Alexandria, Virginia

COLONIAL VIRGINIA

Architectural Influences



The White House, Washington, D.C.
James Hoban



Monticello, Charlottesville, Virginia
Thomas Jefferson



University of Virginia, The Lawn, Charlottesville, Virginia
Thomas Jefferson

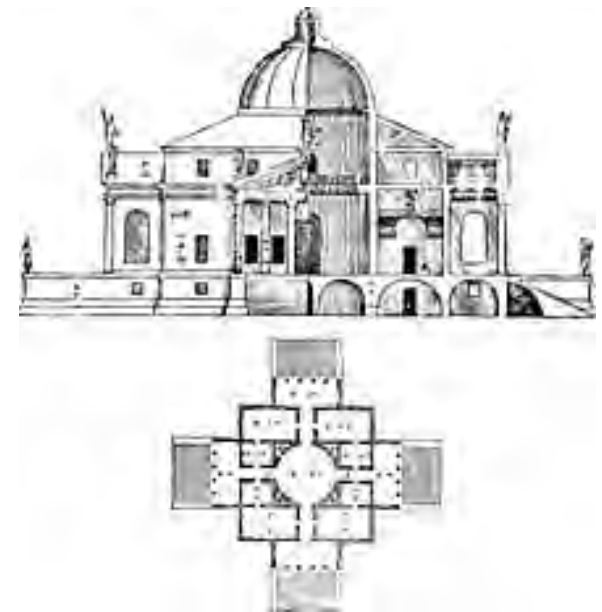


Monticello, Charlottesville, Virginia
Thomas Jefferson

PALLADIAN



Villa la Rotonda, Vicenza, Italy
Andrea Palladio



- Symmetry
- Limestone or white stucco
- Raised podium
- Formal placement in landscape

A Town Green for Weston CT



A Town Green for Weston CT



EXISTING ASSETS

- Town Hall, built 1952
- Stone wall at Norfield Road
- Flagpole
- Gazebo, built 1990s
- Evergreen & deciduous trees
- Lawn & some understory plantings
- Lampposts
- Wood benches
- Stone benches
- 9/11 memorial bench
- Weston historical marker
- Blossoming ornamental trees - redbuds, dogwoods & magnolia
- War memorials: 'Honor Roll' (WWI & WWII), Vietnam, Persian Gulf

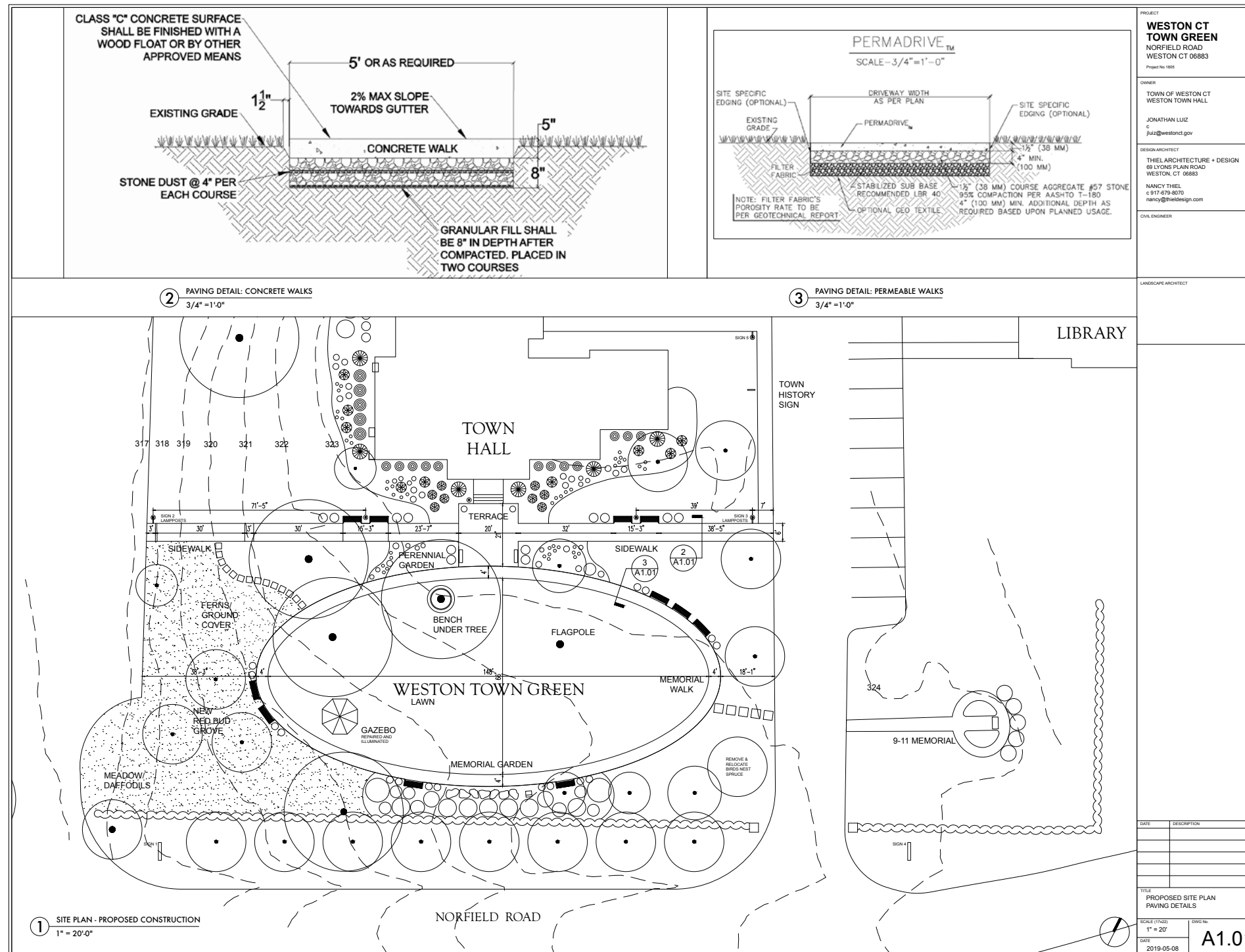
A Town Green for Weston CT



A Town Green for Weston CT



A Town Green for Weston CT



PAVING DETAILS

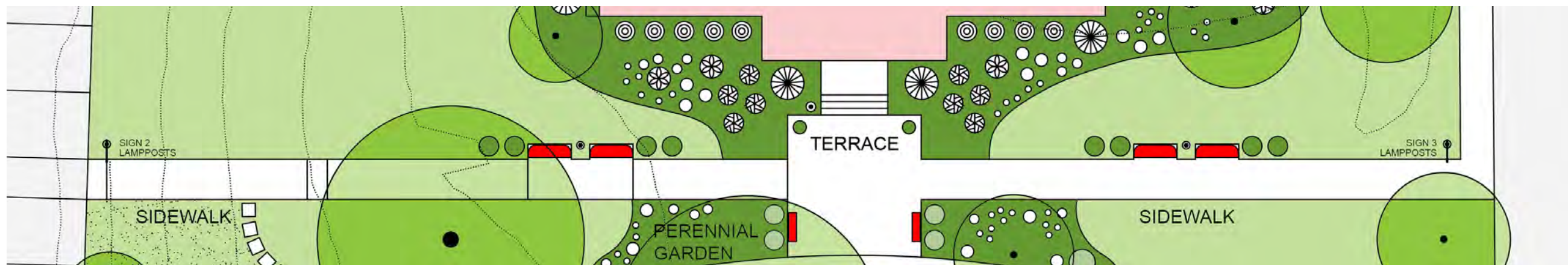
A Town Green for Weston CT



TOWN HALL TERRACE

- Concrete sidewalk to match Town standard
- Concrete pads at benches

Make sidewalk
ADA accessible



A Town Green for Weston CT



WAVENY PARK
New Canaan, CT

MEMORIAL WALK

- Permeable paving
- Aggregate to be stone, white/gray mix
- Metal edging



A Town Green for Weston CT



IMPROVED SEATING

A Town Green for Weston CT



BELSON 'Courtyard' cast aluminum bench, ipe back & seat



THOMAS STEELE 'Carnival' steel bench, ipe back & seat



SITESCAPES 'Avondale' steel bench, ipe back & seat



LANDSCAPE FORMS 'Melville' bench, ipe seat

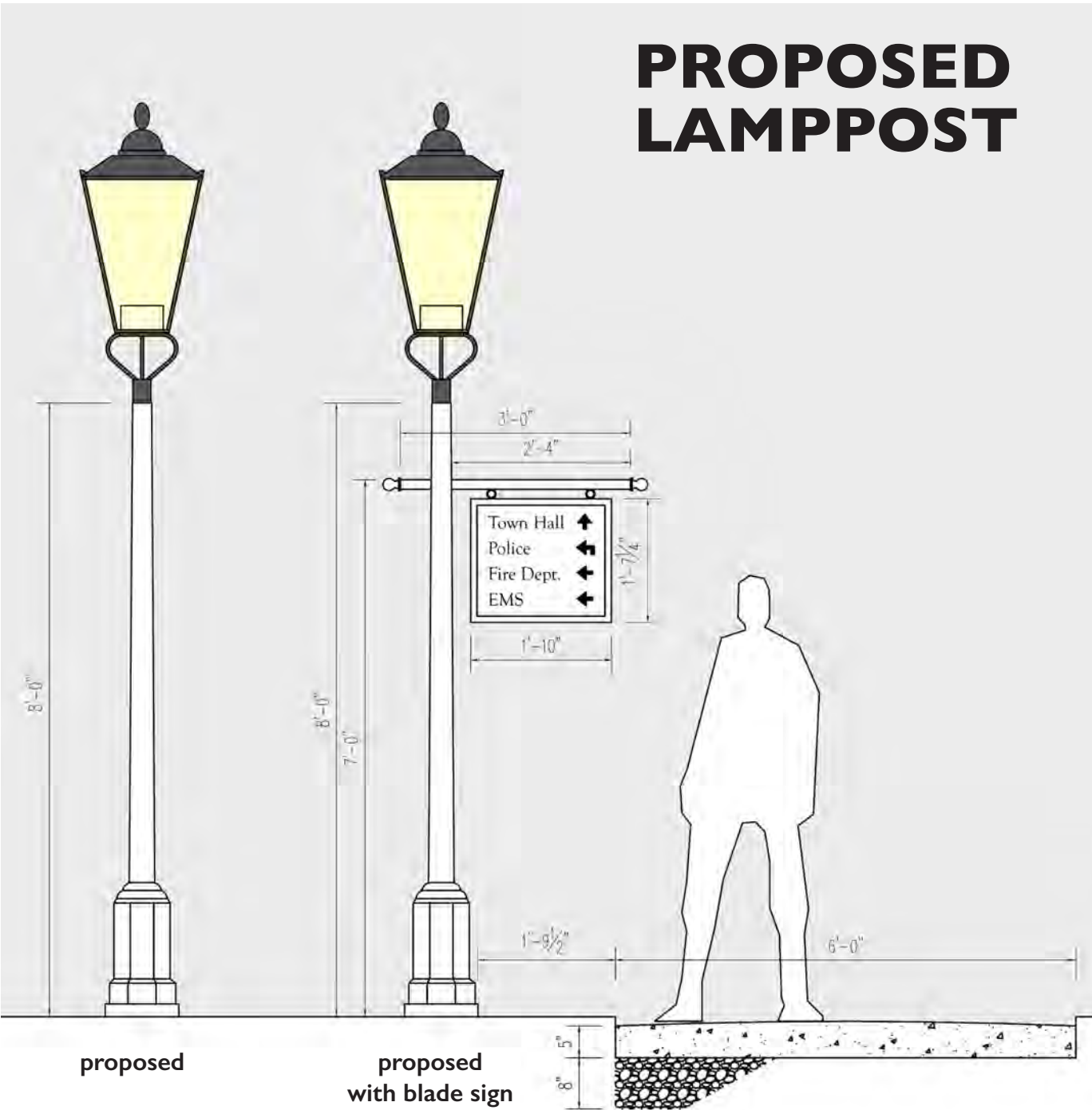
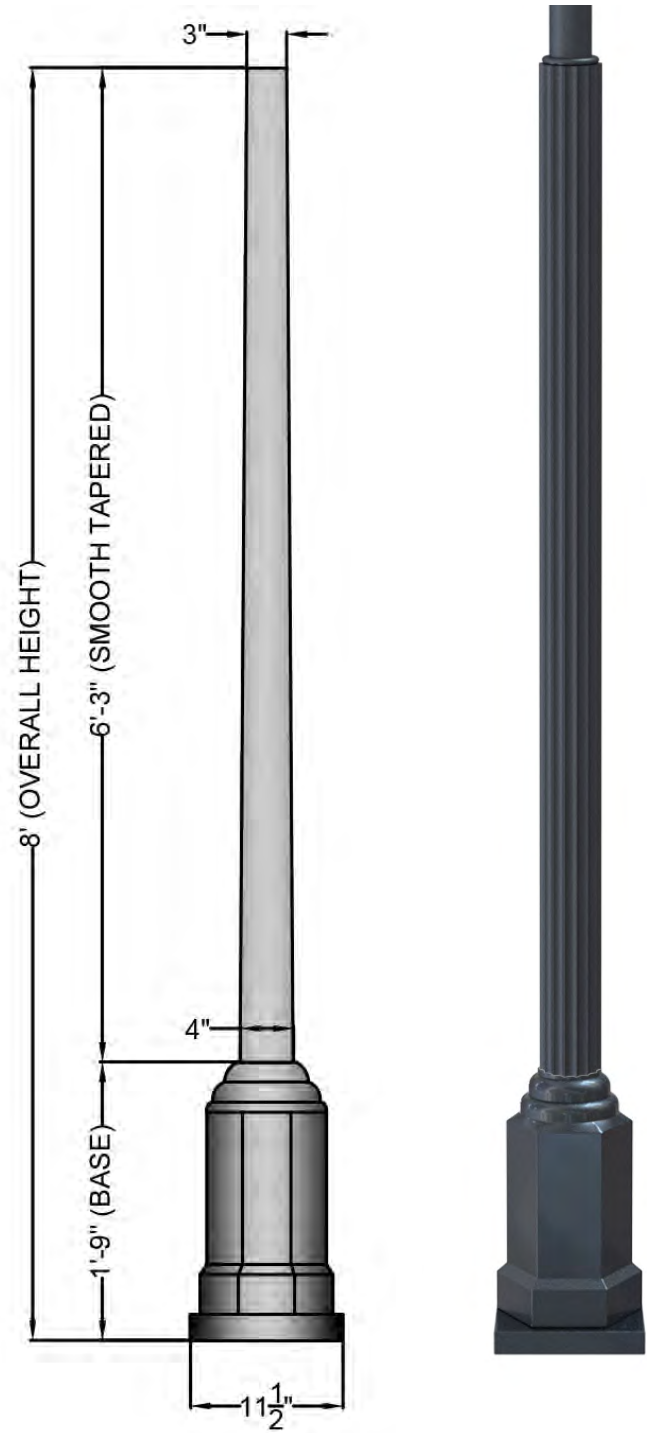
6-FT BENCH OPTIONS



THOMAS STEELE 'Carnival' bench in steel

- Powder-coated metal for durability and zero maintenance
- Hardwood seat for comfort

A Town Green for Weston CT



A Town Green for Weston CT

NEW TOWN SIGNAGE

SIGN #1 - Norfield Road West, facing east

SIGN #4 - Norfield Road East, facing east

SIGN #3

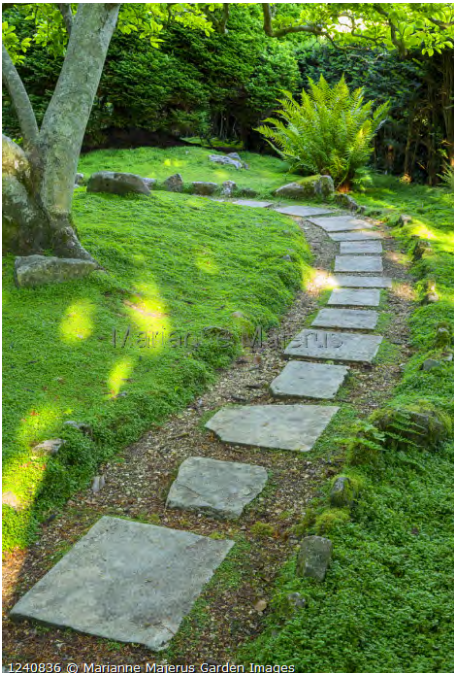
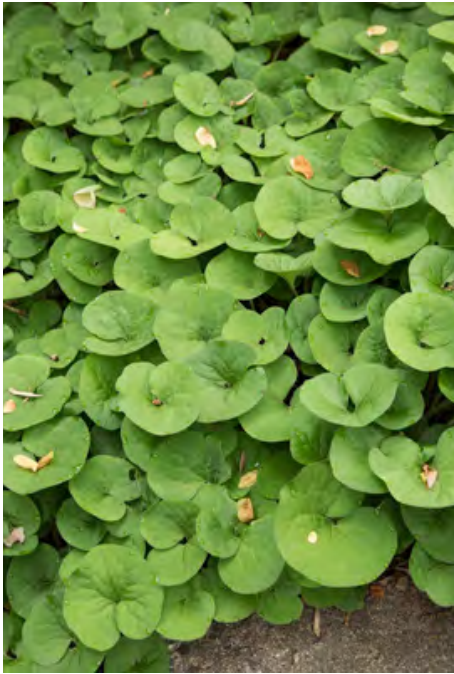
SIGN #5

SIGN #6

A Town Green for Weston CT



**PERENNIAL
GARDEN**
Red, White & Blue



**MEADOW
& GROUND
COVERS**

A Town Green for Weston CT



IMPROVED MEMORIAL SPACE



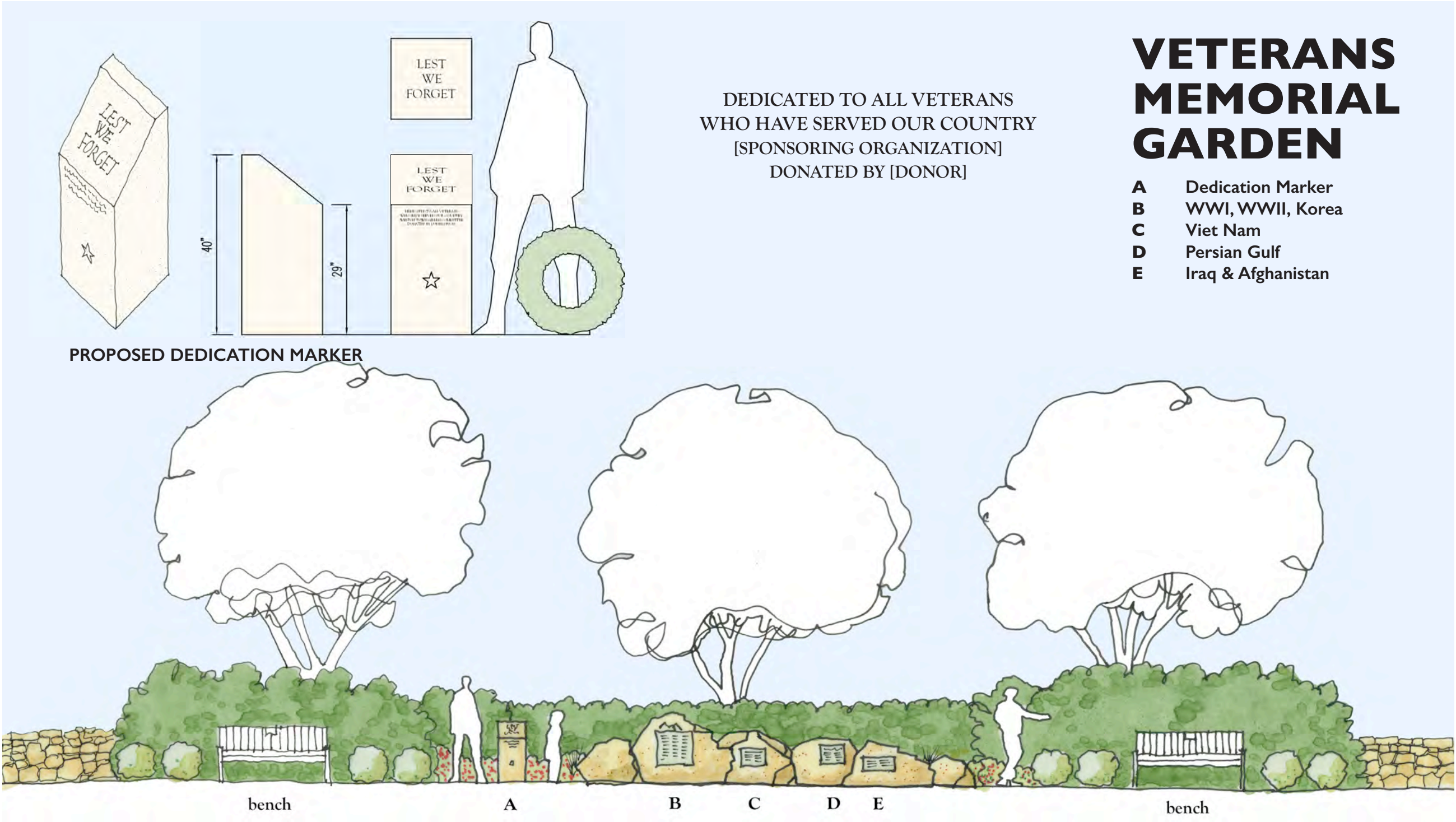
A Town Green for Weston CT



WAR
MEMORIAL
GARDEN



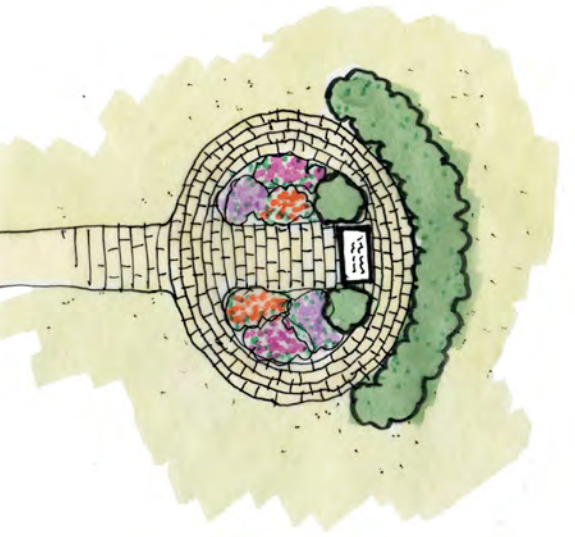
A Town Green for Weston CT



A Town Green for Weston CT



9/11 MEMORIAL GARDEN



LATE SUMMER FLOWERING PLANTS



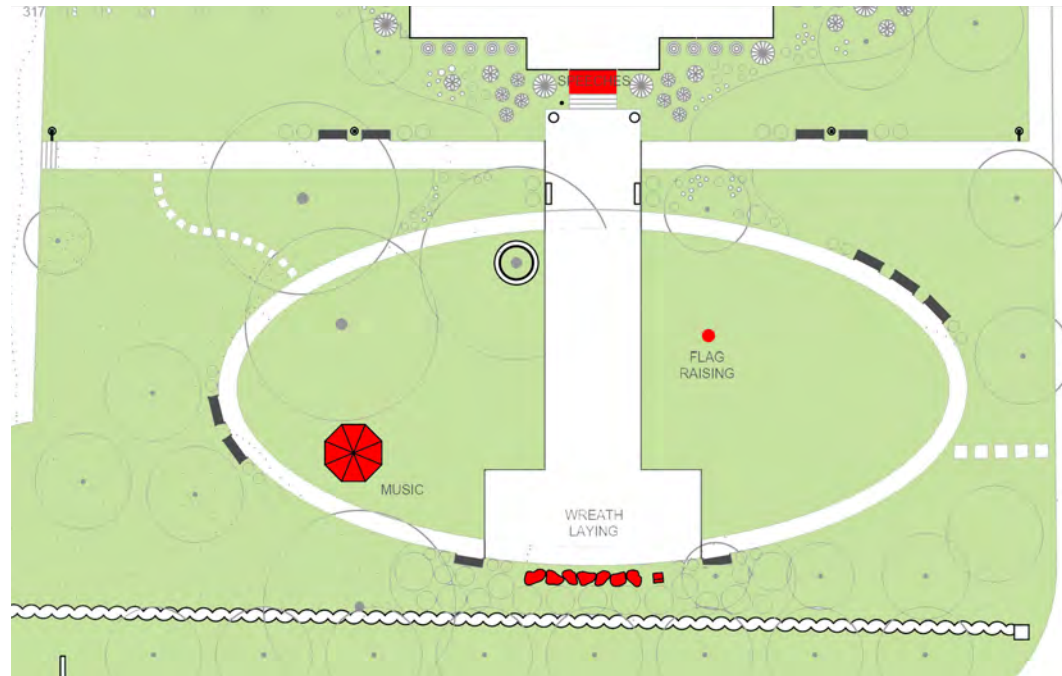
Civic Engagement on the Green



ROBUST EVENTS CALENDAR

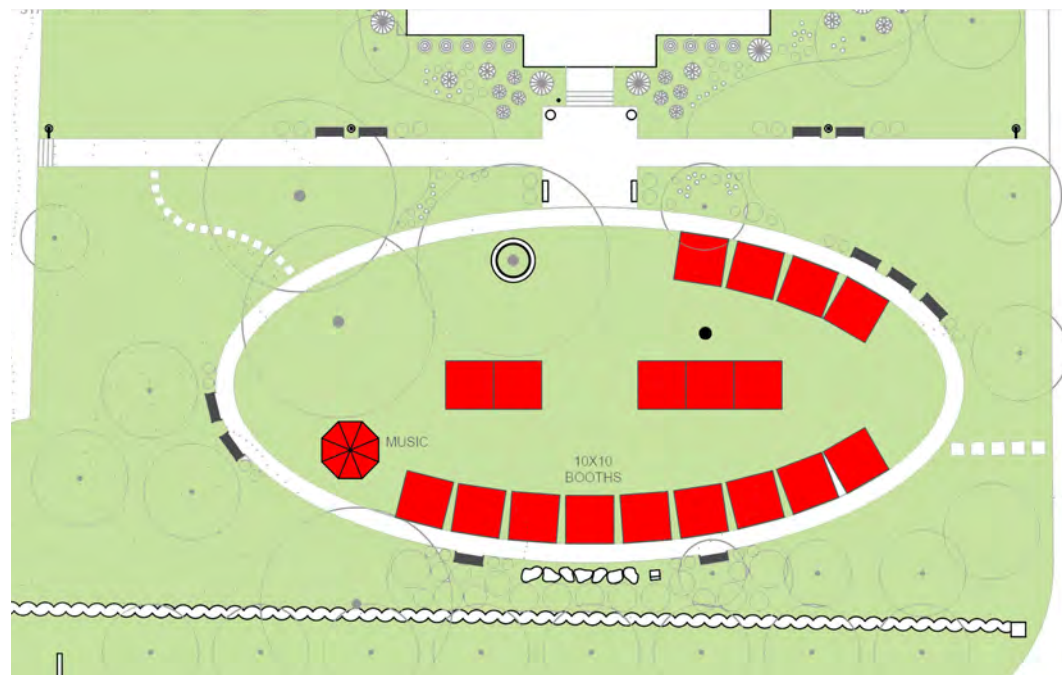
- Martin Luther King Day
- Groundhog Day
- Presidents Day
- St. Patrick's Day
- Easter
- May Day
- Graduations
- Memorial Day
- Weddings
- Pride
- Independence Day
- Summer movies
- Peace Day
- 9/11 Remembrance
- Founders Day
- Halloween
- Election Day
- Veterans Day
- Thanksgiving
- Meteor Day
- Seasons Greetings
- New Year's Eve

Civic Engagement on the Green



MEMORIAL CEREMONIES

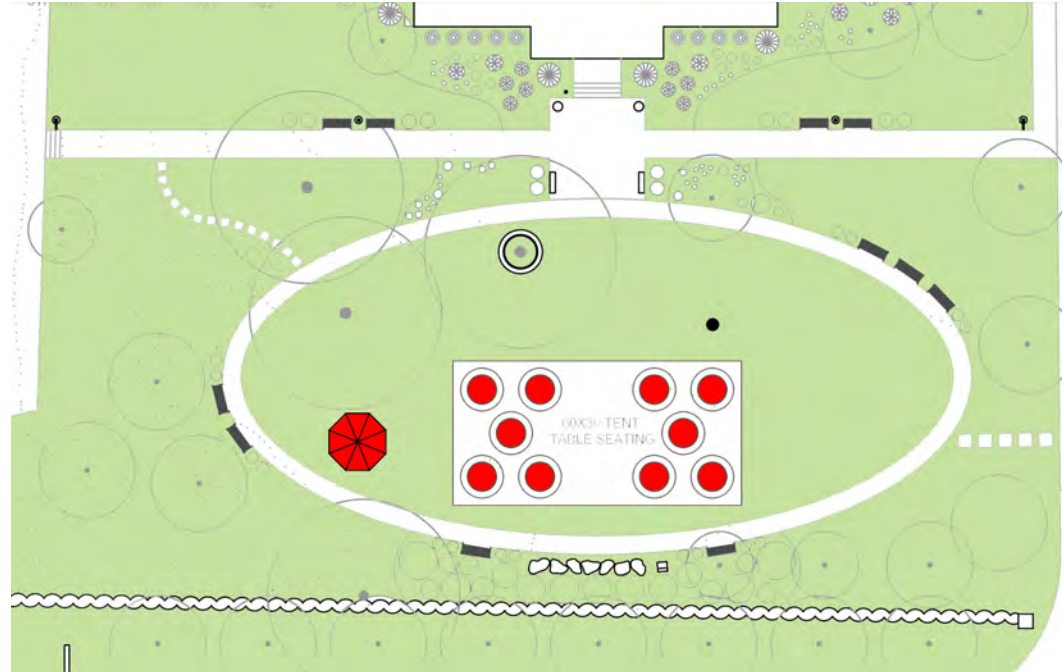
- Musicians in the Gazebo
- Flag-raising and anthem-singing
- Speeches on the Town Hall steps
- Wreath-laying procession to new War Memorial



MARKETS & ART FAIRS

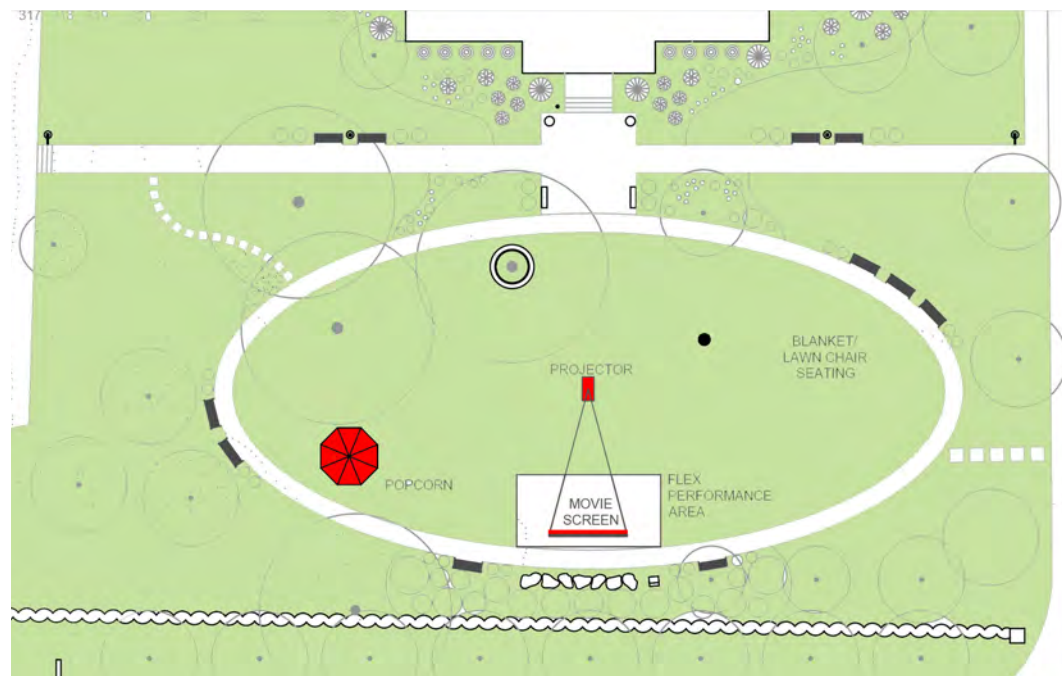
- Market booths set up along ellipse
- Live musical performances in the Gazebo
- Capacity (18) booths

Civic Engagement on the Green



TENTED EVENTS

- 30' x 60' tent
- Maximum tent seating 120 people
- Power points in a few locations
- Create a Town Picnic



MOVIES, MUSICIANS, ACTORS & DANCERS

- Blanket & lawn chair seating
- Senior seating on ellipse
- Concessions in the Gazebo

A Town Green for Weston CT

*A General Assembly holden at New Haven on the
Second Thursday of October A.D. 1787.
Upon the Petition of the Inhabitant of the Parish of
Fairfield in the County of Fairfield and of the Inhabitants*

Courtesy of Weston Town Hall

*At a General Assembly holden at New Haven on the
Second Thursday of October A.D. 1787.
Upon the Petition of the Inhabitant of the Parish of North
Fairfield in the County of Fairfield and of the Inhabitants of that
part of the Parish of Fairfield which lies in the Township of
Fairfield in said County, praying to be incorporated into a
distinct and separate Town, as per Petition on file.
Resolved by this Assembly that all the Inhabitants
who live within the Limits of the Parish of North Fairfield in
the County of Fairfield, and all the Inhabitants who live
in that part of the Parish of Fairfield, which lies in the
Township of Fairfield in said County, be and they lawfully
are incorporated into a distinct, separate Town by the
Name of the Town of Weston, with full Power and
Authority to have, use, possess and enjoy all the Rights,
Privileges and Immunities, which pertain to the
several Towns in this State respectively, with the
following Exception Only, to-wit: That they be at-
-tached but one Representative to sit in the General
Assembly of this State, and that all the Land, which
are contained within the Line and Limits of the Parish
of North Fairfield aforesaid, and all the Land which are con-
-tained within the Line and Limits of that part of the
Parish of Fairfield lying in Fairfield aforesaid be and
belong to said Town of Weston, bounded in the Manner
following (viz) West on the East Line of Norwalk,
Southwesterly on the Parish of Green Farms, Greenfield and
Northfield, Easterly on the Parish of North Stratford until it
comes to the Parish Line of New Stratford, running
Westerly from the Dwelling House now occupied by Watson
Shearman, then running Westerly on said Line until it
comes to the Westerly Corner of said New Stratford Parish.*

OCT 11
FOUNDERS
DAY



Next Steps



Step 1: DESIGN

- Beautification Committee discusses options
- Finalize proposed concept design
- Coordinate with Milone & MacBroom master planning
- Prepare slide show and presentation materials for ongoing advocacy

Step 2: CONSENSUS BUILDING

- Town Boards & Commissions
 - Town Selectmen
 - Planning & Zoning Commission
 - Parks & Recreation Commission
 - Conservation Commission
 - Board of Education
 - Historic District Commission
 - Weston Commission for the Arts
 - Weston Library Board
 - Commission on Aging
- Town Committees
 - Marketing Committee
 - Committee for Veterans Affairs
- Community Stakeholders
 - Weston Historical Society
 - Weston Kiwanis
 - VFW
 - WestonArts
 - Boy & Girl Scouts

Step 3: BUDGET & SCHEDULE

- Preliminary selections for plant materials
- Preliminary selections for civic furnishings
- Develop preliminary budget
- Set fund-raising goal: Use No Public Funds
- Establish fund-raising organization
- Establish project phasing
- Appoint Executive Director

Preliminary Phasing



PHASE 1: Preparation

- Site protection
 - Trees & plants
 - Gazebo
 - Flagpole
 - Town Hall
- Temporary location for existing plant materials to be re-used
- Identify substrate utilities
- Staging of construction materiel



PHASE 2: Demolition

- Remove hardscaping
- Remove lamp posts
- Remove boulders



PHASE 3: Infrastructure

- Replace top soil
- Install electrical & security infrastructure
- Install water lines for hose bibs & irrigation (as req'd)



PHASE 4: Concrete & Masonry

- Rough grading
- Construction of concrete walkways and post footings
- Install memorial boulders



PHASE 5: Landscaping

- Final grading
- Installation of plant materials
- Plant trees
- Repairs to Gazebo



PHASE 6: Civic Furniture

- Install lamp posts
- Install signage
- Install benches
- Install bins
- Final installation of memorial markers & plaques
- Paint shutters and walls as req'd
- Remove site protection
- Celebrate

A Town Green for Weston CT



CIVIC ENGAGEMENT

- A place to gather
- A place to delight
- A place to remember
- A place to honor

